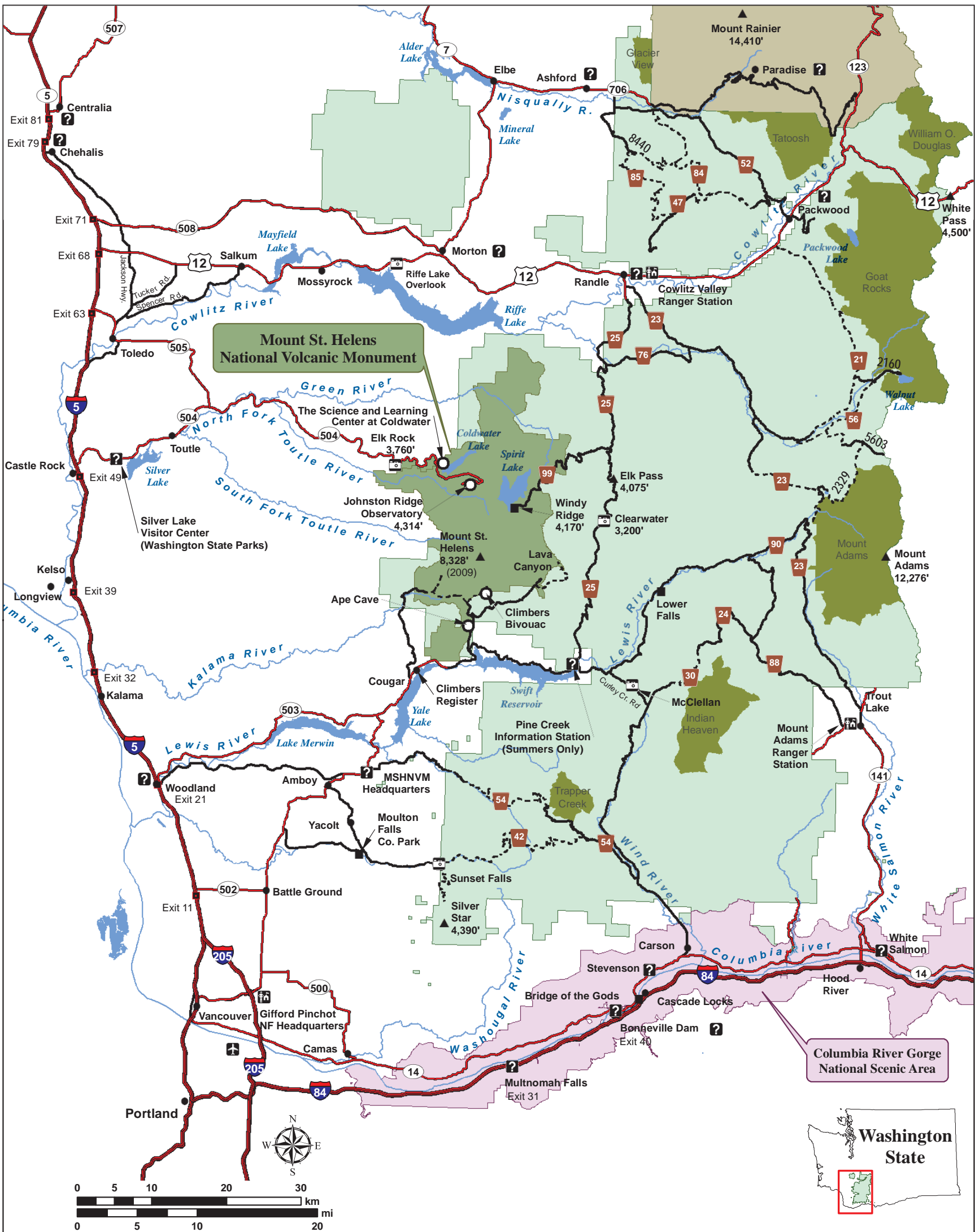




# Gifford Pinchot National Forest Vicinity



for the greatest good



For more information, visit our websites at:  
<http://www.fs.usda.gov/giffordpinchot>  
<http://www.fs.usda.gov/mountsthelens>  
 or call (360) 891-5000

USDA Forest Service is an equal opportunity provider and employer.

- Gifford Pinchot NF**
- Admin. Boundary
  - Mount St. Helens NVM
  - Wilderness Area
  - Columbia River Gorge NSA
  - Paved Road
  - Gravel Road
  - Recreation Site

- Landmarks**
- Locale
  - Summit
  - City, Town, Community
  - Airport

- Transportation**
- Interstate Hwy.
  - US, State or County Hwy.
  - Other Paved Road
  - Milepost Marker

- Hydrography**
- Lakes and River Areas
  - Rivers

This map is intended for general reference and is approximate in general proportions.

Elevations are in Feet

For Road and Recreation Conditions Report, go to this link:  
<http://www.fs.usda.gov/recremain/giffordpinchot/recreation#cond>

Printed June, 2012